



# PLUS Highway Accidents Statistics

**Infinity Wave Research Team**

**Authors:** Hanif Abdul Manap, Awang Mohd  
Ashraffarhan

**Editors:** Sr Dr. Noor Azeyah Khiyon, Zul Azhan Abu  
Bakar

<https://www.linkedin.com/company/infinitywavetech/>  
<https://infinitywave.io/>

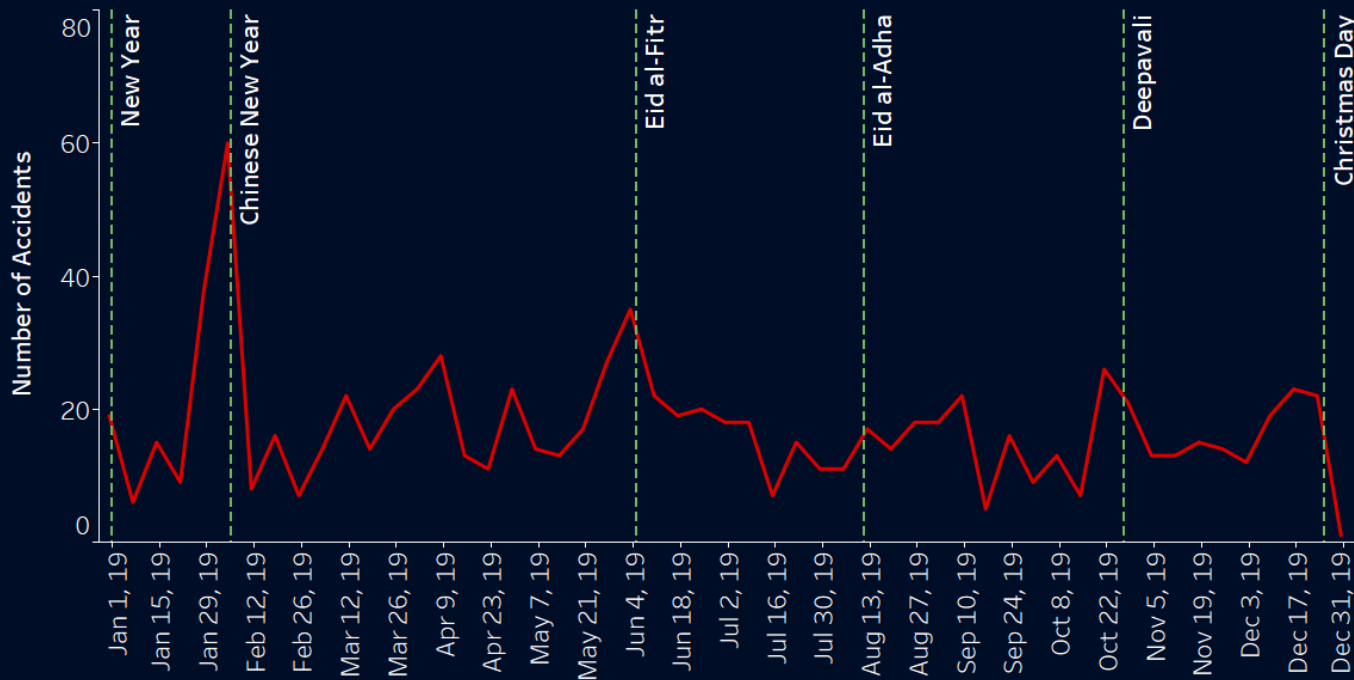


# 5335

**The number of accidents  
on PLUS Highways from  
Jan 2019 to June 2022**

# PLUS Accidents Year 2019

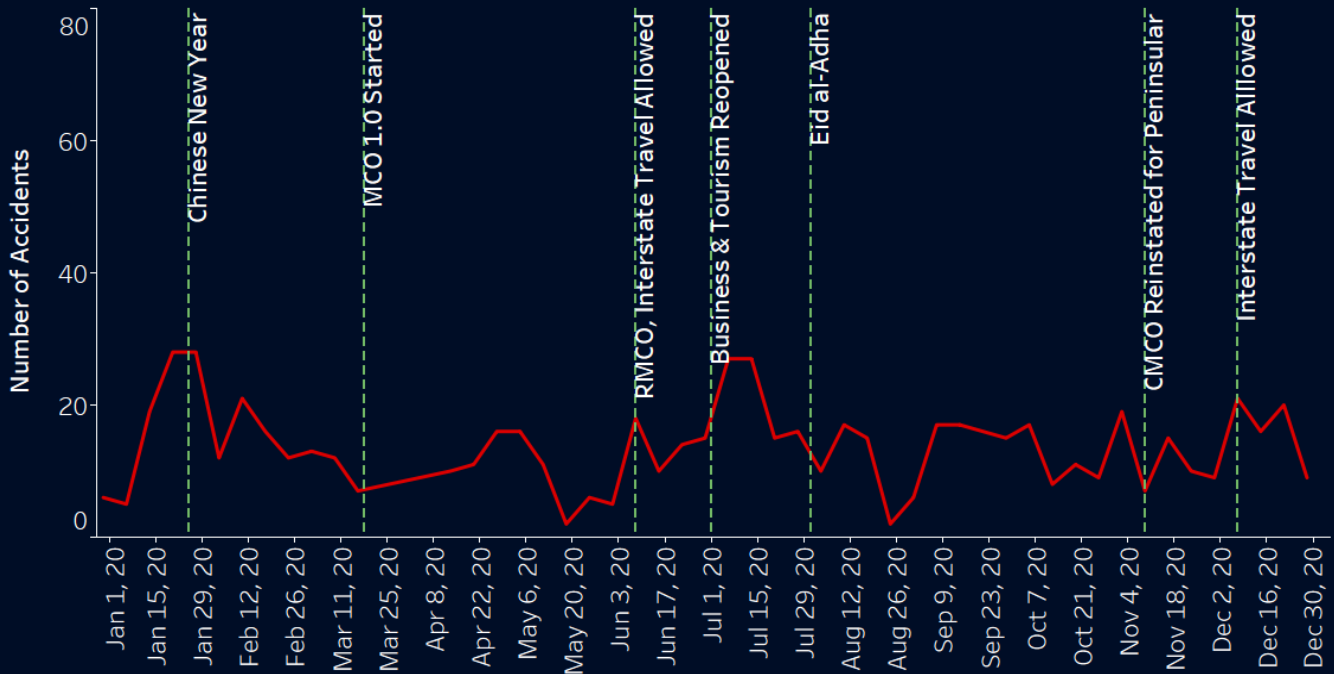
Total accidents = 911



In 2019, most accidents occurred during the festive seasons. The Chinese New Year period recorded the highest accident numbers, all highways congested with people going back to hometown as well as others who took the opportunity for a short vacation

# PLUS Accidents Year 2020

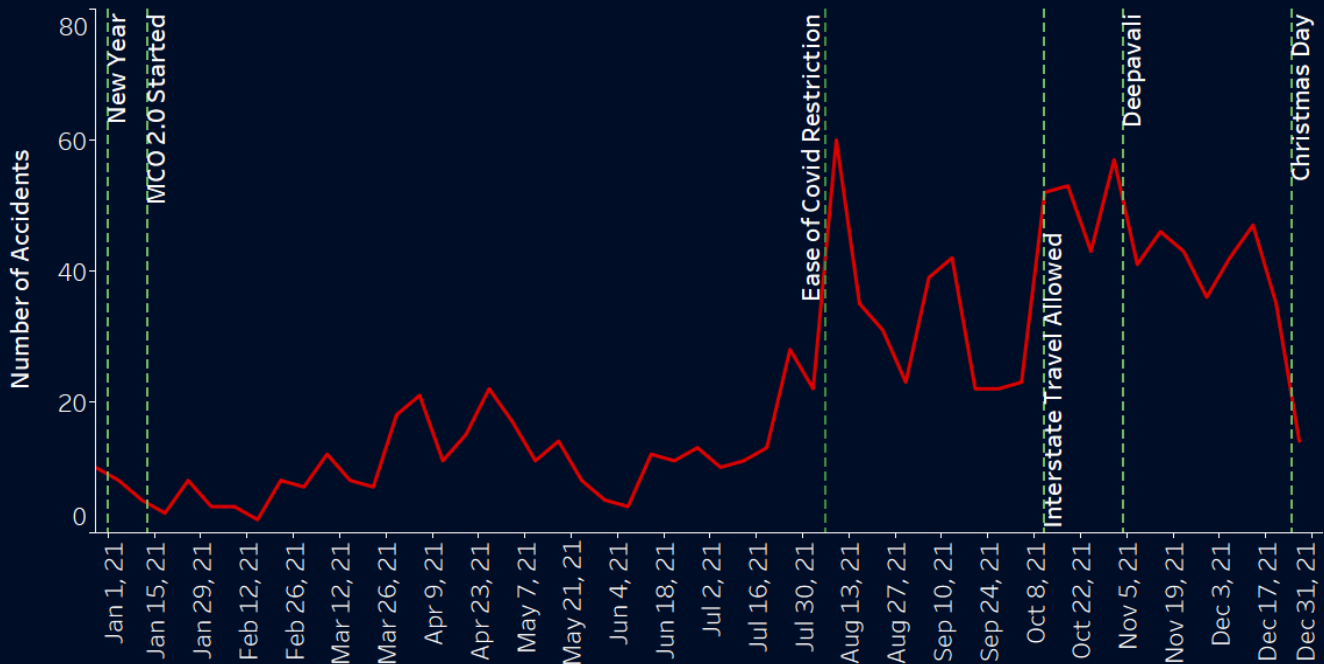
Total accidents = 684



In 2020, accidents trend changed due to series of MCOs during the COVID-19 pandemic. Accidents number down by 24.9% from 2019. Accident numbers increased after the reopening of tourism and entertainment sectors on July 2020, with people eager for a vacation after a months-long nationwide lockdown.

# PLUS Accidents Year 2021

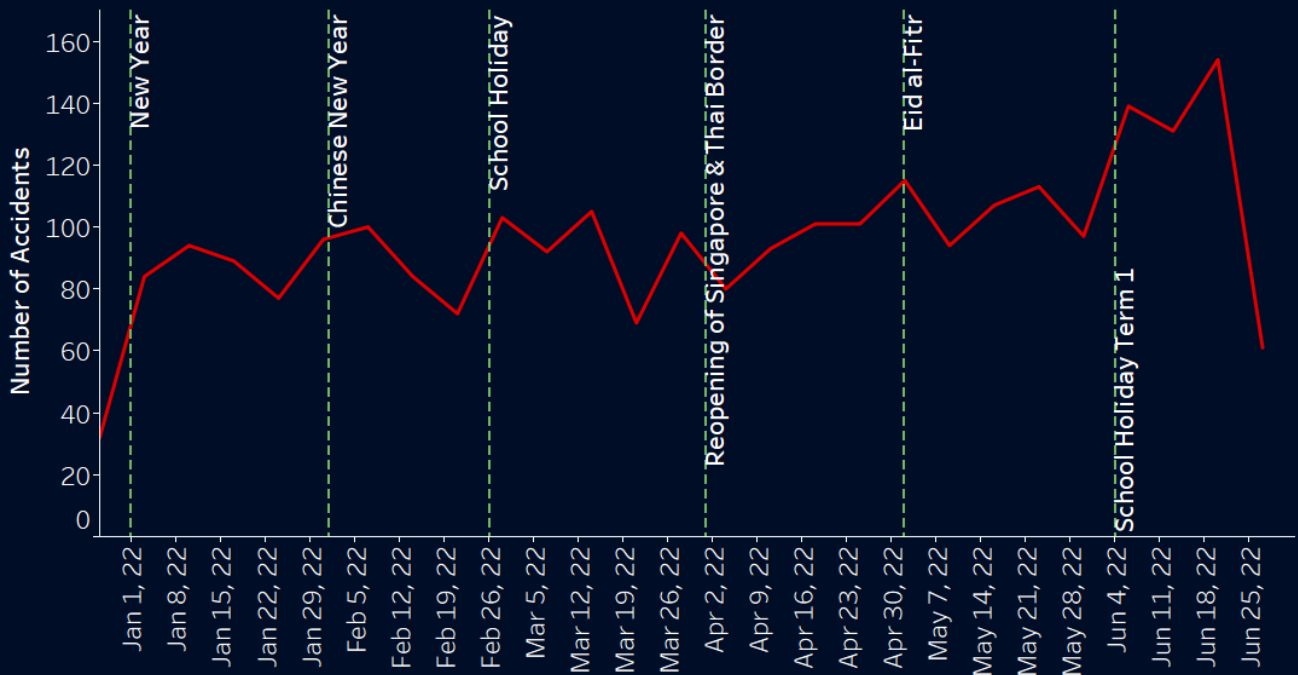
Total accidents = 1159



Low accident numbers from January 2021 – end of July 2021 due to MCO 2.0. With the ease of Covid restrictions started from August 2021, number of travellers on highways increased and contributed to the sudden spike in accident numbers on the same month. Accident numbers remain high for the rest of the year, especially during festive periods

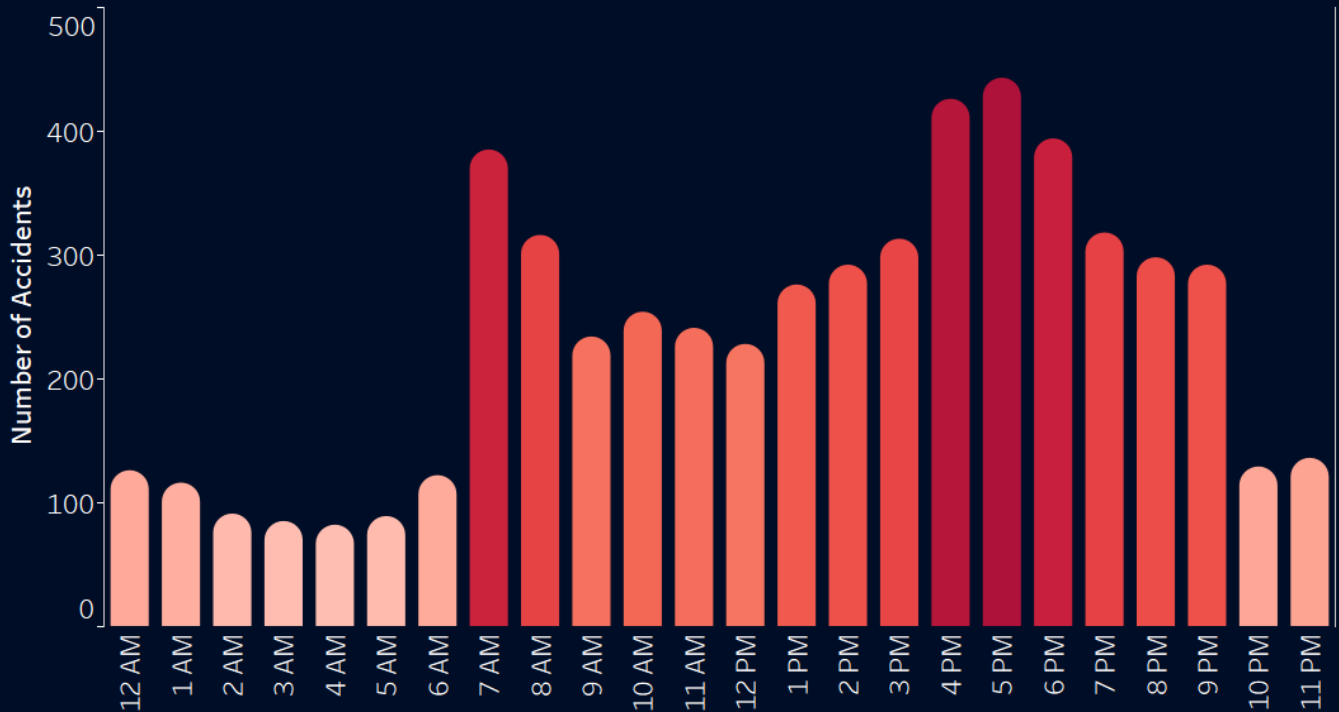
# PLUS Accidents Jan-Jun 2022

Total accidents = 2581



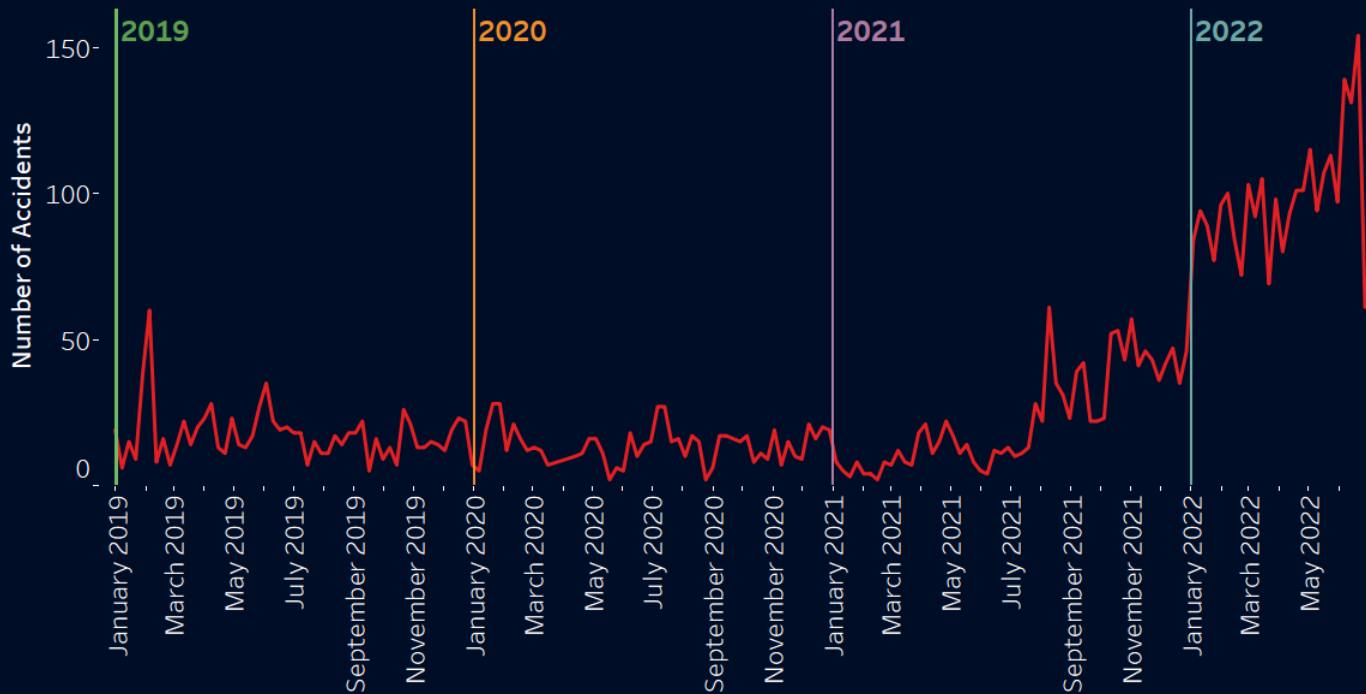
The trend in 2022 is similar to pre-Covid-19, high accident numbers during the festive seasons. Accident number is significantly higher compared to previous years and steadily increasing as the country transitioned to endemic phase. Increasing number of car ownerships and travellers from Singapore and Thailand resulted in higher traffics on highways

# Time of Accidents



Majority of accidents reported during the morning and the late afternoon rush hours

# PLUS Accidents Trend Jan 2019 - June 2022





# PLUS Accidents on Northern (E1) and Southern (E2) route

